

Alabama Rural Health Facts 2024

Curious about other states?



AL Health Infrastructure

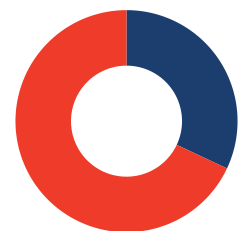
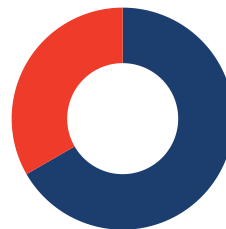
- 6 Critical Access Hospitals
- 126 Federally Qualified Health Centers
- 48 Prospective Payment System Hospitals
- 158 Rural Health Clinics
- 10 Medicare-Dependent Hospitals

AL Health Professional Shortage Areas

- Primary Care** 35 of 36 rural counties have primary care HPSAs.
- Mental Health** 36 of 36 rural counties have mental health HPSAs.
- Dental Care** 32 of 36 rural counties have dental care HPSAs.

AL Hospital Vulnerabilities

30% of rural hospitals are vulnerable to closure.



68% of rural hospitals operate on negative margins.

Hospital Closures & Conversions

1 Hospital conversion since 2010

6 Hospital closures since 2010

Source: UNC, 2024.

Source: RHI Hub, 2024.

Source: Georgetown, 2024.

Source: Chartis, 2024.

Alaska Rural Health Facts 2024

Curious about other states?



AK Health Infrastructure

13 Critical Access Hospitals

31 Federally Qualified Health Centers

4 Prospective Payment System Hospitals

3 Medicare-Dependent Hospitals

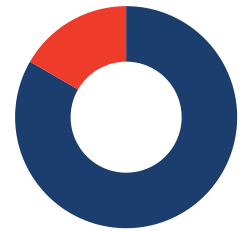
AK Health Professional Shortage Areas

Primary Care 24 of 26 rural counties have primary care HPSAs.

Mental Health 26 of 26 rural counties have mental health HPSAs.

Dental Care 24 of 26 rural counties have dental care HPSAs.

AK Hospital Vulnerabilities



15% of rural hospitals operate on negative margins.



0% of rural hospitals are vulnerable to closure.

Source: UNC, 2024.

Source: RHI Hub, 2024.

Source: Georgetown, 2024.

Source: Chartis, 2024.

Arizona Rural Health Facts 2024

Curious about other states?



AZ Health Infrastructure

17 Critical Access Hospitals

72 Federally Qualified Health Centers

12 Prospective Payment System Hospitals

53 Rural Health Clinics

AZ Health Professional Shortage Areas

Primary Care

7 of 7 rural counties have primary care HPSAs.

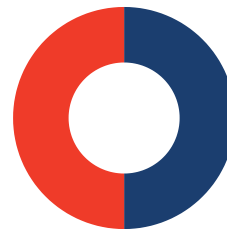
Mental Health

7 of 7 rural counties have mental health HPSAs.

Dental Care

7 of 7 rural counties have dental care HPSAs.

AZ Hospital Vulnerabilities



50% of rural hospitals are vulnerable to closure.



31% of rural hospitals operate on negative margins.

AZ Hospital Closures & Conversions

2 Hospital conversions since 2010

2 Hospital closures since 2010

Source: UNC, 2024.

Source: RHI Hub, 2024.

Source: Georgetown, 2024.

Source: Chartis, 2024.

Arkansas Rural Health Facts 2024

Curious about other states?



AR Health Infrastructure

27 Critical Access Hospitals

158 Federally Qualified Health Centers

21 Prospective Payment System Hospitals

4 Rural Emergency Hospitals

145 Rural Health Clinics

AR Health Professional Shortage Areas

Primary Care

53 of 58 rural counties have primary care HPSAs.

Mental Health

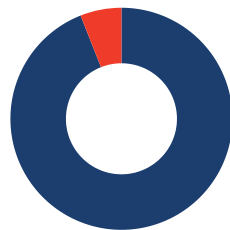
58 of 58 rural counties have mental health HPSAs.

Dental Care

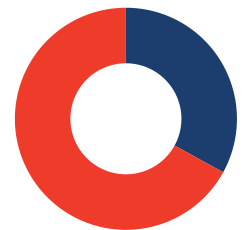
49 of 58 rural counties have dental care HPSAs.

AR Hospital Vulnerabilities

6% of rural hospitals are vulnerable to closure.



67% of rural hospitals operate on negative margins.



AR Hospital Closures

2 Hospital closures since 2010

Source: UNC, 2024.

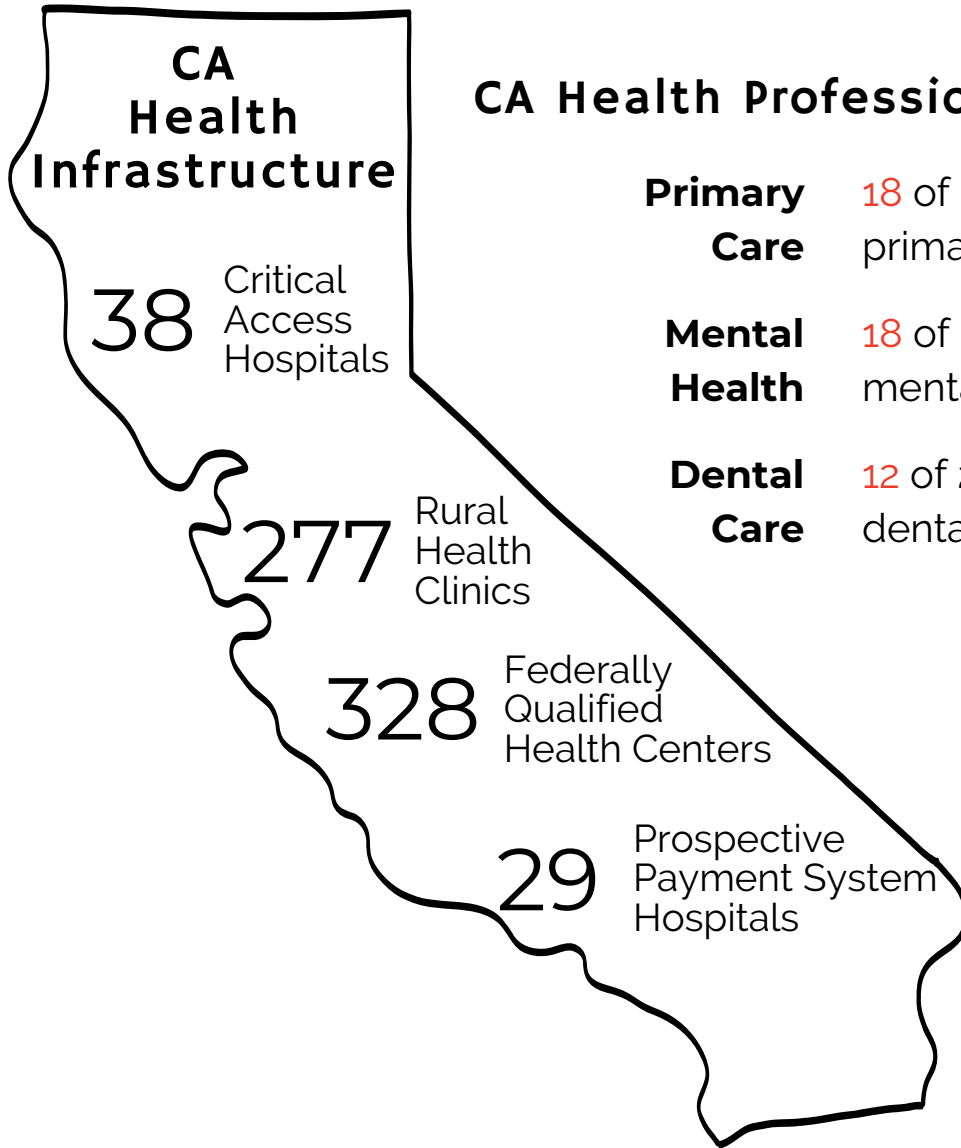
Source: RHI Hub, 2024.

Source: Georgetown, 2024.

Source: Chartis, 2024.

California Rural Health Facts 2024

Curious about other states?

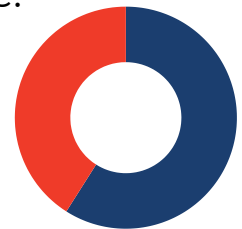
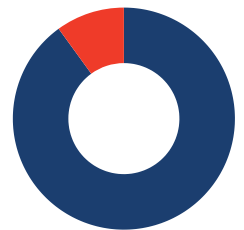


CA Health Professional Shortage Areas

- Primary Care** 18 of 21 rural counties have primary care HPSAs.
- Mental Health** 18 of 21 rural counties have mental health HPSAs.
- Dental Care** 12 of 21 rural counties have dental care HPSAs.

CA Hospital Vulnerabilities

10% of rural hospitals are vulnerable to closure.



41% of rural hospitals operate on negative margins.

CA Hospital Closures & Conversions

4 Hospital conversions since 2010

5 Hospital closures since 2010

Source: UNC, 2024.

Source: RHI Hub, 2024.

Source: Georgetown, 2024.

Source: Chartis, 2024.

Colorado Rural Health Facts 2024

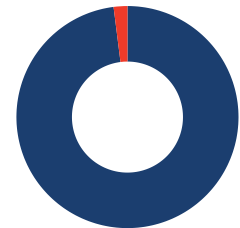
Curious about other states?



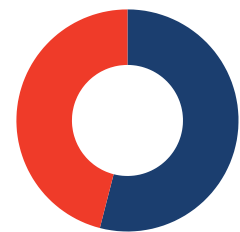
CO Health Infrastructure

| | |
|-----|--------------------------------------|
| 32 | Critical Access Hospitals |
| 100 | Federally Qualified Health Centers |
| 11 | Prospective Payment System Hospitals |
| 60 | Rural Health Clinics |
| 1 | Medicare-Dependent Hospital |

CO Hospital Vulnerabilities



2% of rural hospitals are vulnerable to closure.



46% of rural hospitals operate on negative margins.

CO Health Professional Shortage Areas

Primary Care 40 of 47 rural counties have primary care HPSAs.

Mental Health 47 of 47 rural counties have mental health HPSAs.

Dental Care 37 of 47 rural counties have dental care HPSAs.

Source: UNC, 2024.

Source: RHI Hub, 2024.

Source: Georgetown, 2024.

Source: Chartis, 2024.

Connecticut Rural Health Facts 2024

Curious about other states?



CT Hospital Vulnerabilities

100% of rural hospitals operate on negative margins.



CT Health Infrastructure

1

Medicare-Dependent Hospital

12

Federally Qualified Health Centers

5

Prospective Payment System Hospitals

CT Health Professional Shortage Areas

Primary Care 1 of 1 rural counties have primary care HPSAs.

Mental Health 1 of 1 rural counties have mental health HPSAs.

Dental Care 1 of 1 rural counties have dental care HPSAs.

Source: UNC, 2024.

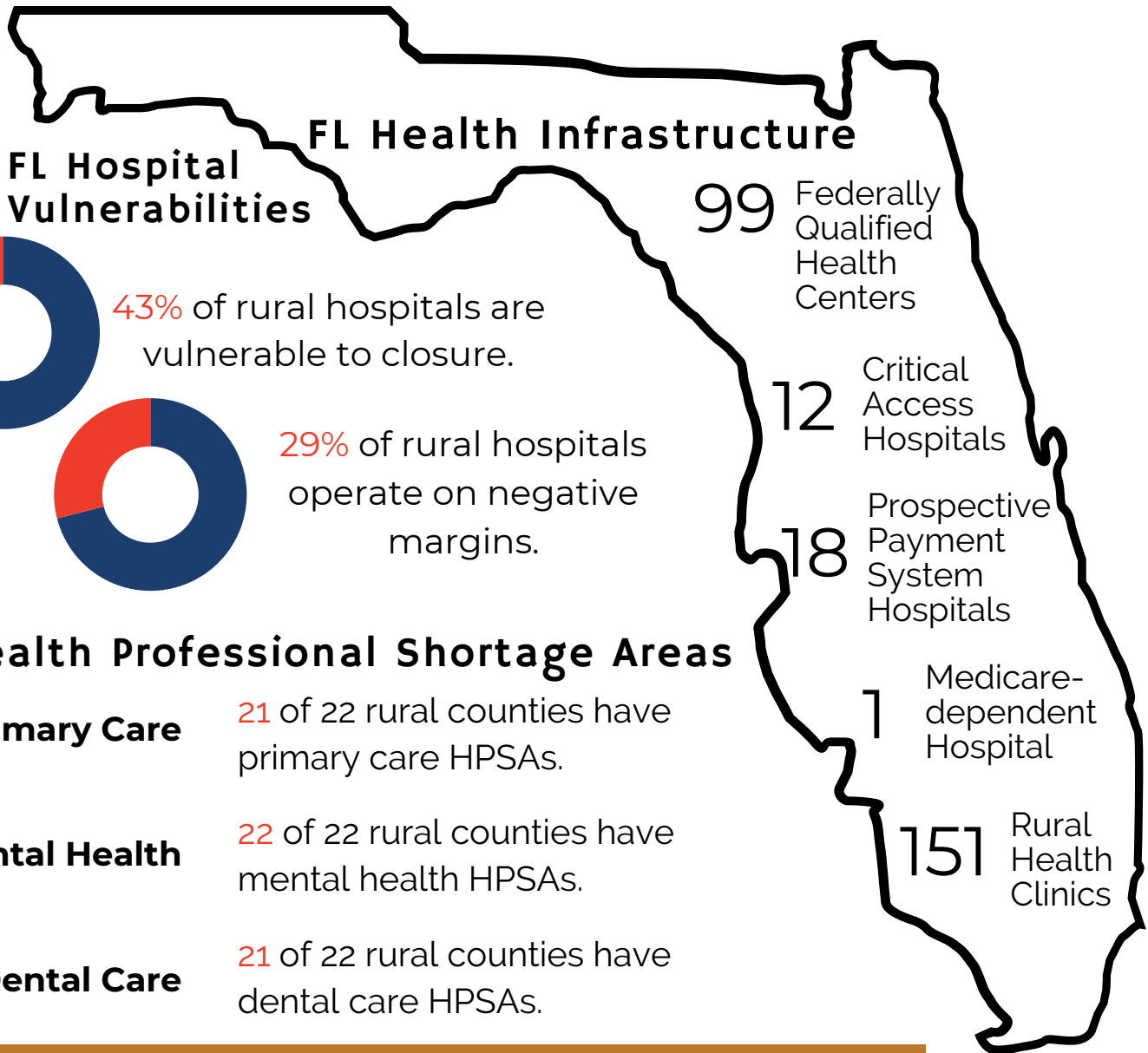
Source: RHI Hub, 2024.

Source: Georgetown, 2024.

Source: Chartis, 2024.

Florida Rural Health Facts 2024

Curious about other states?



FL Hospital Closures & Conversions

3 Hospital conversions since 2010

5 Hospital closures since 2010

Source: UNC, 2024.

Source: RHI Hub, 2024.

Source: Georgetown, 2024.

Source: Chartis, 2024.

Georgia Rural Health Facts 2024

Curious about other states?



GA Health Infrastructure

30 Critical Access Hospitals

184 Federally Qualified Health Centers

46 Prospective Payment System Hospitals

94 Rural Health Clinics

2 Medicare-dependent Hospitals

3 Rural Emergency Hospitals

GA Health Professional Shortage Areas

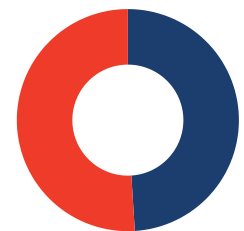
Primary Care 84 of 85 rural counties have primary care HPSAs.

Mental Health 85 of 85 rural counties have mental health HPSAs.

Dental Care 75 of 85 rural counties have dental care HPSAs.

GA Hospital Vulnerabilities

34% of rural hospitals are vulnerable to closure.



GA Hospital Closures & Conversions

3 Hospital conversions since 2010

6 Hospital closures since 2010

51% of rural hospitals operate on negative margins.

Source: UNC, 2024.

Source: RHI Hub, 2024.

Source: Georgetown, 2024.

Source: Chartis, 2024.

Hawaii Rural Health Facts 2024

Curious about other states?



HI Health Infrastructure

5 Prospective Payment System Hospitals

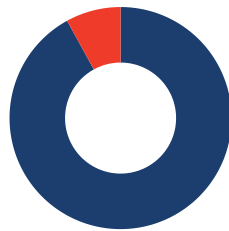
35 Federally Qualified Health Centers

22 Rural Health Clinics

9 Critical Access Hospitals

HI Hospital Vulnerabilities

8% of rural hospitals are vulnerable to closure.



36% of rural hospitals operate on negative margins.

HI Health Professional Shortage Areas

Primary Care 2 of 2 rural counties have primary care HPSAs.

Mental Health 2 of 2 rural counties have mental health HPSAs.

Dental Care 2 of 2 rural counties have dental care HPSAs.

Source: UNC, 2024.

Source: RHI Hub, 2024.

Source: Georgetown, 2024.

Source: Chartis, 2024.

Idaho Rural Health Facts 2024

Curious about other states?



ID Health Professional Shortage Areas

Primary Care 30 of 30 rural counties have primary care HPSAs.

Mental Health 30 of 30 rural counties have mental health HPSAs.

Dental Care 28 of 30 rural counties have dental care HPSAs.

27

Critical Access Hospitals

2

Prospective Payment System Hospitals

51

Rural Health Clinics

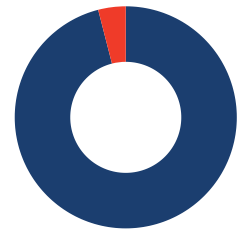
53

Federally Qualified Health Centers

ID Health Infrastructure

ID Hospital Vulnerabilities

4% of rural hospitals are vulnerable to closure.



46% of rural hospitals operate on negative margins.

Source: UNC, 2024.

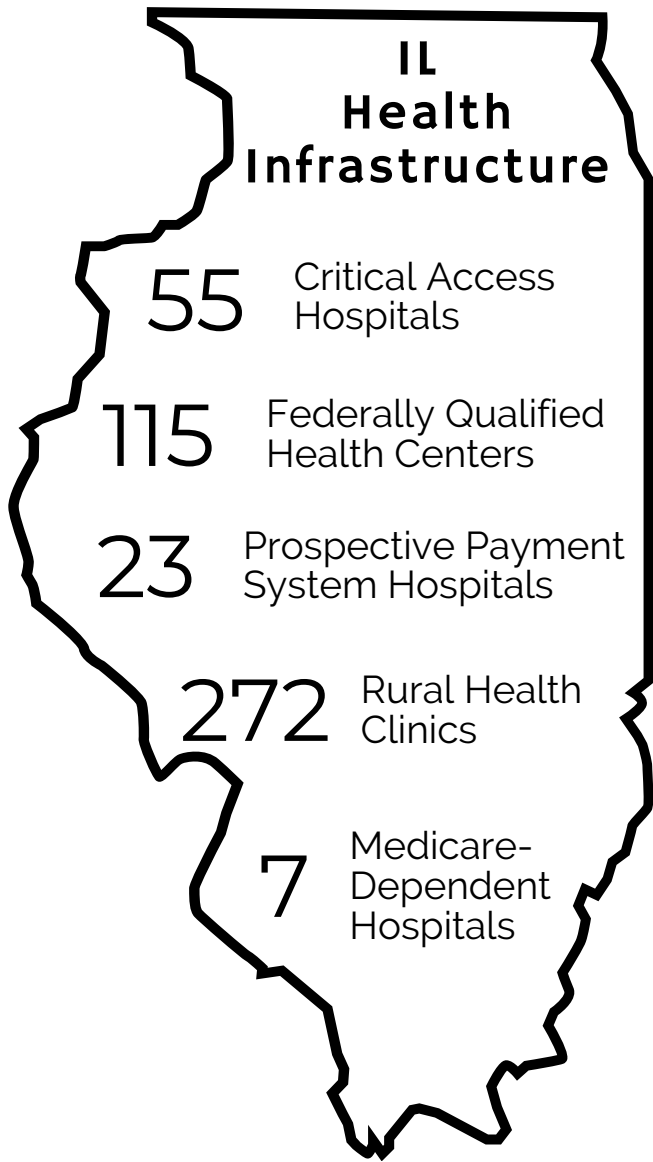
Source: RHI Hub, 2024.

Source: Georgetown, 2024.

Source: Chartis, 2024.

Illinois Rural Health Facts 2024

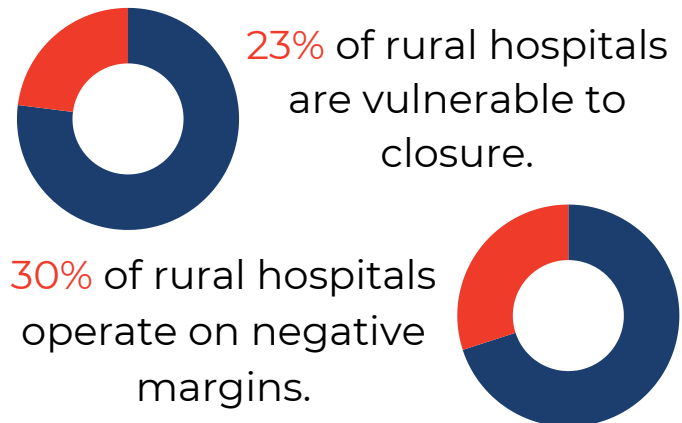
Curious about other states?



IL Health Professional Shortage Areas

- Primary Care** 60 of 65 rural counties have primary care HPSAs.
- Mental Health** 64 of 65 rural counties have mental health HPSAs.
- Dental Care** 57 of 65 rural counties have dental care HPSAs.

IL Hospital Vulnerabilities



IL Hospital Closures & Conversions

3 Hospital conversions since 2010

1 Hospital closure since 2010

Source: UNC, 2024.

Source: RHI Hub, 2024.

Source: Georgetown, 2024.

Source: Chartis, 2024.

Indiana Rural Health Facts 2024

Curious about other states?



IN Health Infrastructure

33 Critical Access Hospitals

111 Federally Qualified Health Centers

24 Prospective Payment System Hospitals

6 Medicare-dependent Hospitals

138 Rural Health Clinics

IN Health Professional Shortage Areas

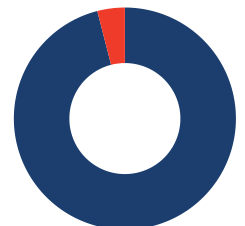
Primary Care 43 of 48 rural counties have primary care HPSAs.

Mental Health 48 of 48 rural counties have mental health HPSAs.

Dental Care 27 of 48 rural counties have dental care HPSAs.

IN Hospital Vulnerabilities

4% of rural hospitals are vulnerable to closure.



33% of rural hospitals operate on negative margins.



IN Hospital Closures & Conversions

3 Hospital conversions since 2010

1 Hospital closure since 2010

Source: UNC, 2024.

Source: RHI Hub, 2024.

Source: Georgetown, 2024.

Source: Chartis, 2024.

Iowa Rural Health Facts 2024

Curious about other states?

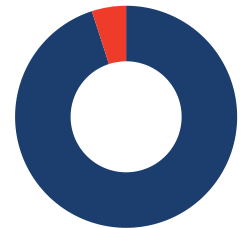


IA Health Infrastructure

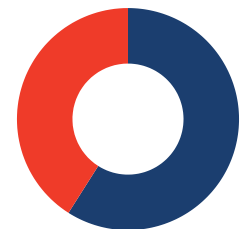
- 83 Critical Access Hospitals
- 56 Federally Qualified Health Centers
- 11 Prospective Payment System Hospitals
- 4 Medicare-Dependent Hospitals
- 212 Rural Health Clinics

IA Hospital Vulnerabilities

5% of rural hospitals are vulnerable to closure.



41% of rural hospitals operate on negative margins.



IA Health Professional Shortage Areas

Primary Care 56 of 77 rural counties have primary care HPSAs.

Mental Health 72 of 77 rural counties have mental health HPSAs.

Dental Care 43 of 77 rural counties have dental care HPSAs.

IA Hospital Closures

2 Hospital closures since 2010

Source: UNC, 2024.

Source: RHI Hub, 2024.

Source: Georgetown, 2024.

Source: Chartis, 2024.

Kansas Rural Health Facts 2024

Curious about other states?

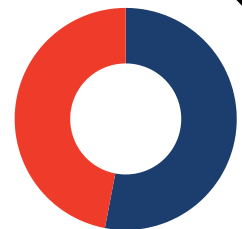


KS Health Infrastructure

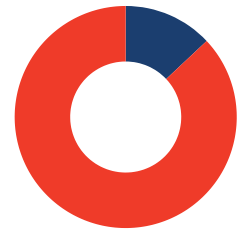
- 2 Medicare-Dependent Hospitals
- 2 Rural Emergency Hospitals
- 22 Prospective Payment System Hospitals
- 58 Federally Qualified Health Centers
- 80 Critical Access Hospitals
- 179 Rural Health Clinics

KS Hospital Vulnerabilities

47% of rural hospitals are vulnerable to closure.



87% of rural hospitals operate on negative margins.



KS Health Professional Shortage Areas

Primary Care 60 of 85 rural counties have primary care HPSAs.

Mental Health 83 of 85 rural counties have mental health HPSAs.

Dental Care 37 of 85 rural counties have dental care HPSAs.

KS Hospital Conversions & Closures

4 Hospital conversions since 2010

Source: UNC, 2024.

6 Hospital closures since 2010

Source: RHI Hub, 2024.

Source: Georgetown, 2024.

Source: Chartis, 2024.

Kentucky Rural Health Facts 2024

Curious about other states?



KY Health Infrastructure

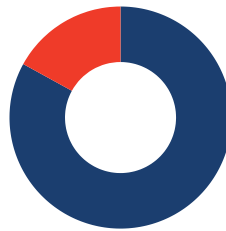
- 1 Rural Emergency Hospital
- 9 Medicare-Dependent Hospitals
- 29 Critical Access Hospitals
- 42 Prospective Payment System Hospitals
- 377 Federally Qualified Health Centers
- 417 Rural Health Clinics

KY Health Professional Shortage Areas

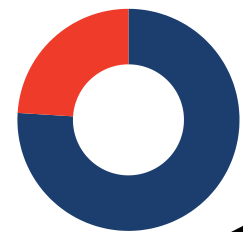
- Primary Care** 80 of 81 rural counties have primary care HPSAs.
- Mental Health** 81 of 81 rural counties have mental health HPSAs.
- Dental Care** 66 of 81 rural counties have dental care HPSAs.

KY Hospital Vulnerabilities

17% of rural hospitals are vulnerable to closure



24% of rural hospitals operate on negative margins



KY Hospital Conversions & Closures

2 Hospital conversions since 2010

Source: UNC, 2024.

2 Hospital closures since 2010

Source: RHI Hub, 2024.

Source: Georgetown, 2024.

Source: Chartis, 2024.

Louisiana Rural Health Facts 2024

Curious about other states?



LA Health Infrastructure

- 1 Rural Emergency Hospital
- 11 Medicare-Dependent Hospitals
- 27 Critical Access Hospitals
- 33 Prospective Payment System Hospitals
- 133 Federally Qualified Health Centers

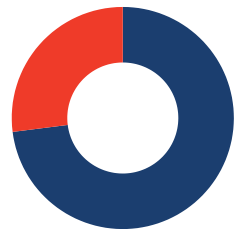
240 Rural Health Clinics

LA Health Professional Shortage Areas

- Primary Care** 27 of 27 rural counties have primary care HPSAs.
- Mental Health** 27 of 27 rural counties have mental health HPSAs.
- Dental Care** 27 of 27 rural counties have dental care HPSAs.

LA Hospital Vulnerabilities

27% of rural hospitals are vulnerable to closure.

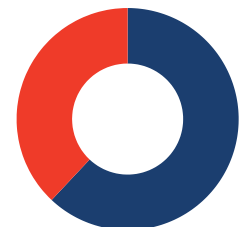


LA Hospital Closures & Conversions

1 Hospital conversion since 2010

1 Hospital closure since 2010

38% of rural hospitals operate on negative margins.



Source: UNC, 2024.

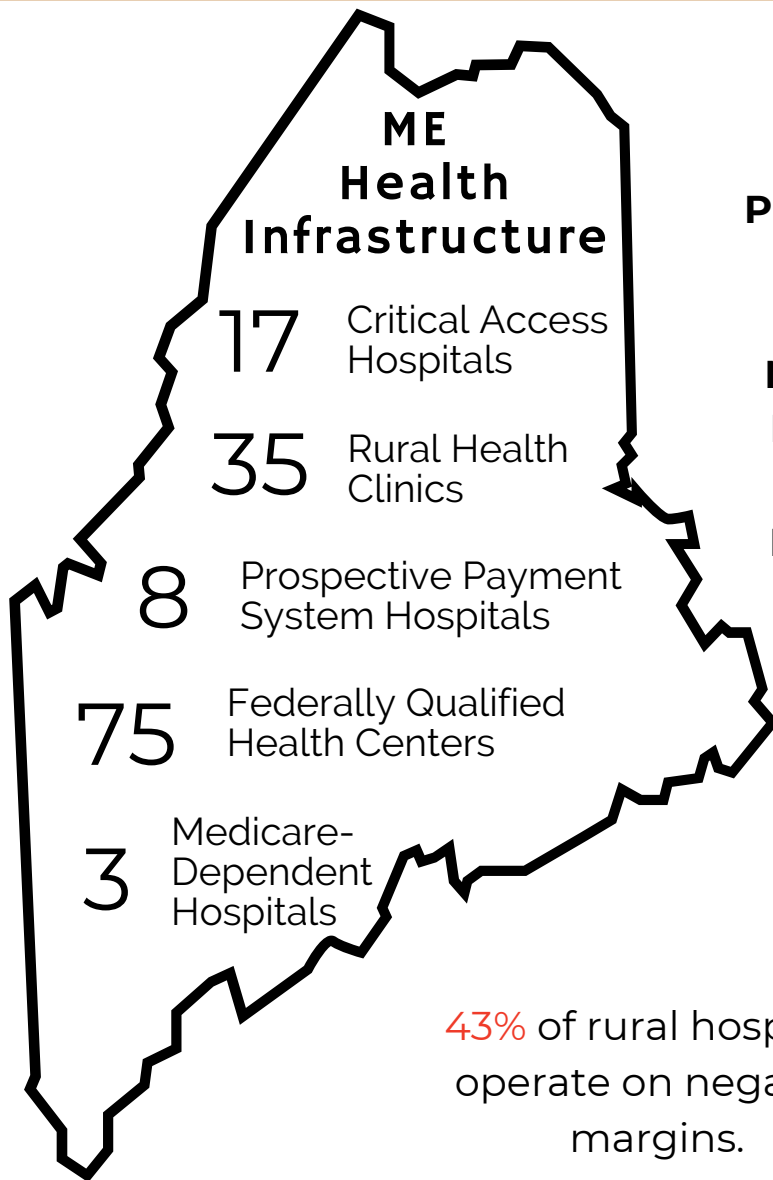
Source: RHI Hub, 2024.

Source: Georgetown, 2024.

Source: Chartis, 2024.

Maine Rural Health Facts 2024

Curious about other states?



ME Health Professional Shortage Areas

Primary Care 10 of 11 rural counties have primary care HPSAs.

Mental Health 9 of 11 rural counties have mental health HPSAs.

Dental Care 11 of 11 rural counties have dental care HPSAs.

ME Hospital Vulnerabilities



0% of rural hospitals are vulnerable to closure.



ME Hospital Conversions

3 Hospital conversions since 2010

Source: UNC, 2024.

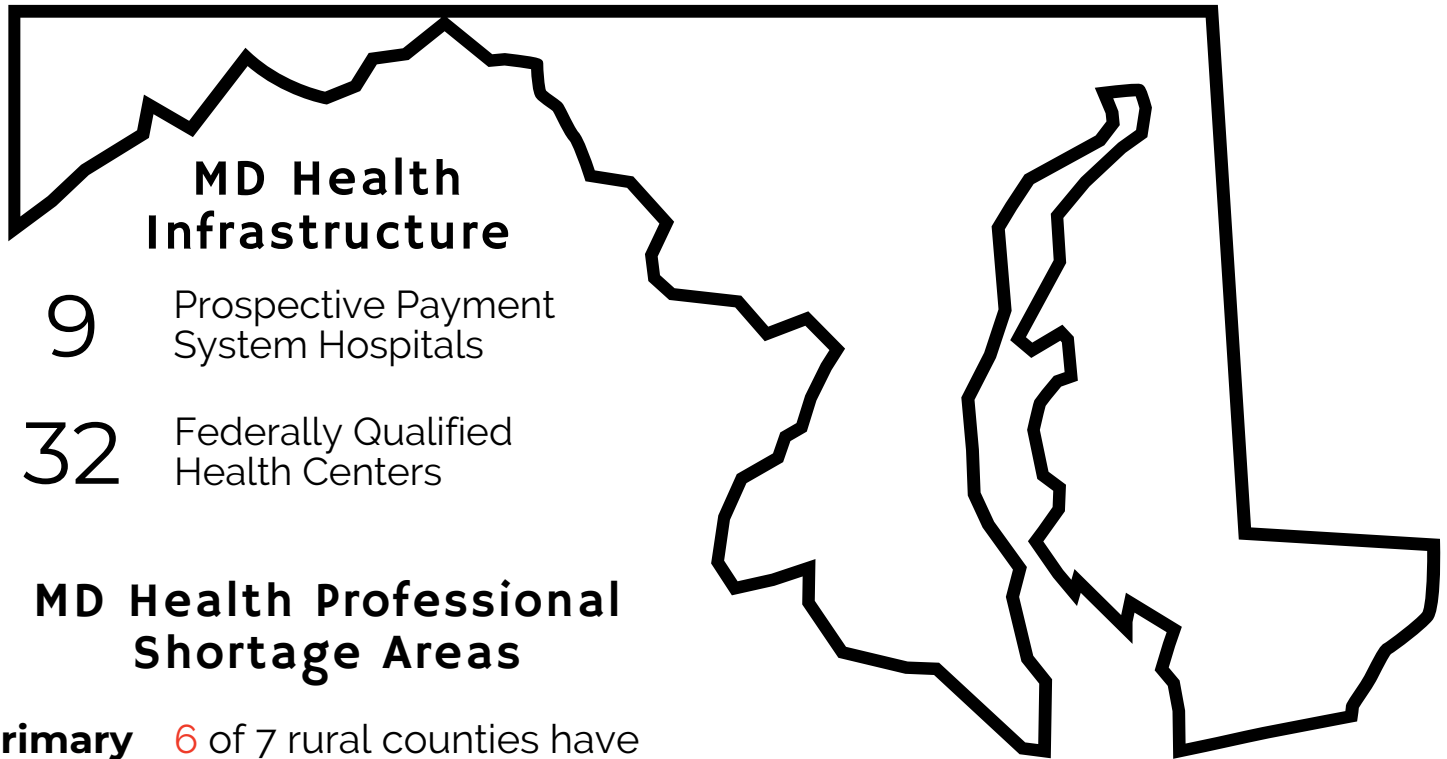
Source: RHI Hub, 2024.

Source: Georgetown, 2024.

Source: Chartis, 2024.

Maryland Rural Health Facts 2024

Curious about other states?



MD Health Professional Shortage Areas

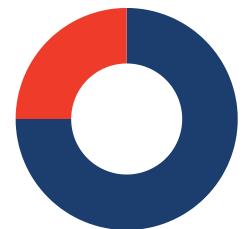
Primary Care 6 of 7 rural counties have primary care HPSAs.

Mental Health 7 of 7 rural counties have mental health HPSAs.

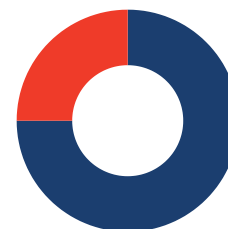
Dental Care 7 of 7 rural counties have dental care HPSAs.

MD Hospital Vulnerabilities

25% of rural hospitals are vulnerable to closure.



25% of rural hospitals operate on negative margins.



MD Hospital Conversions

1 Hospital conversion since 2010

Source: UNC, 2024.

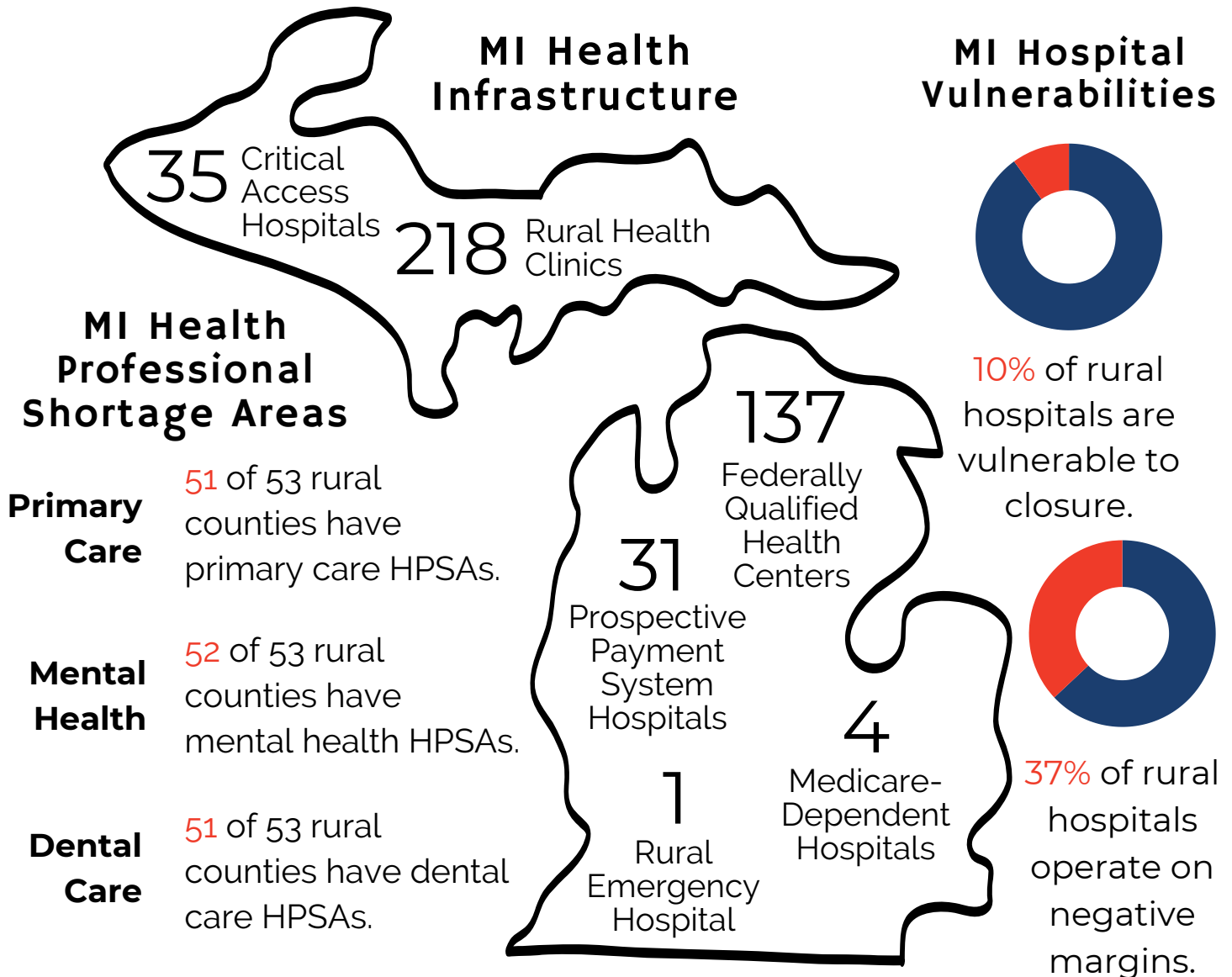
Source: RHI Hub, 2024.

Source: Georgetown, 2024.

Source: Chartis, 2024.

Michigan Rural Health Facts 2024

Curious about other states?



MI Hospital Closures & Conversions

3 Hospital conversions since 2010

1 Hospital closure since 2010

Source: UNC, 2024.

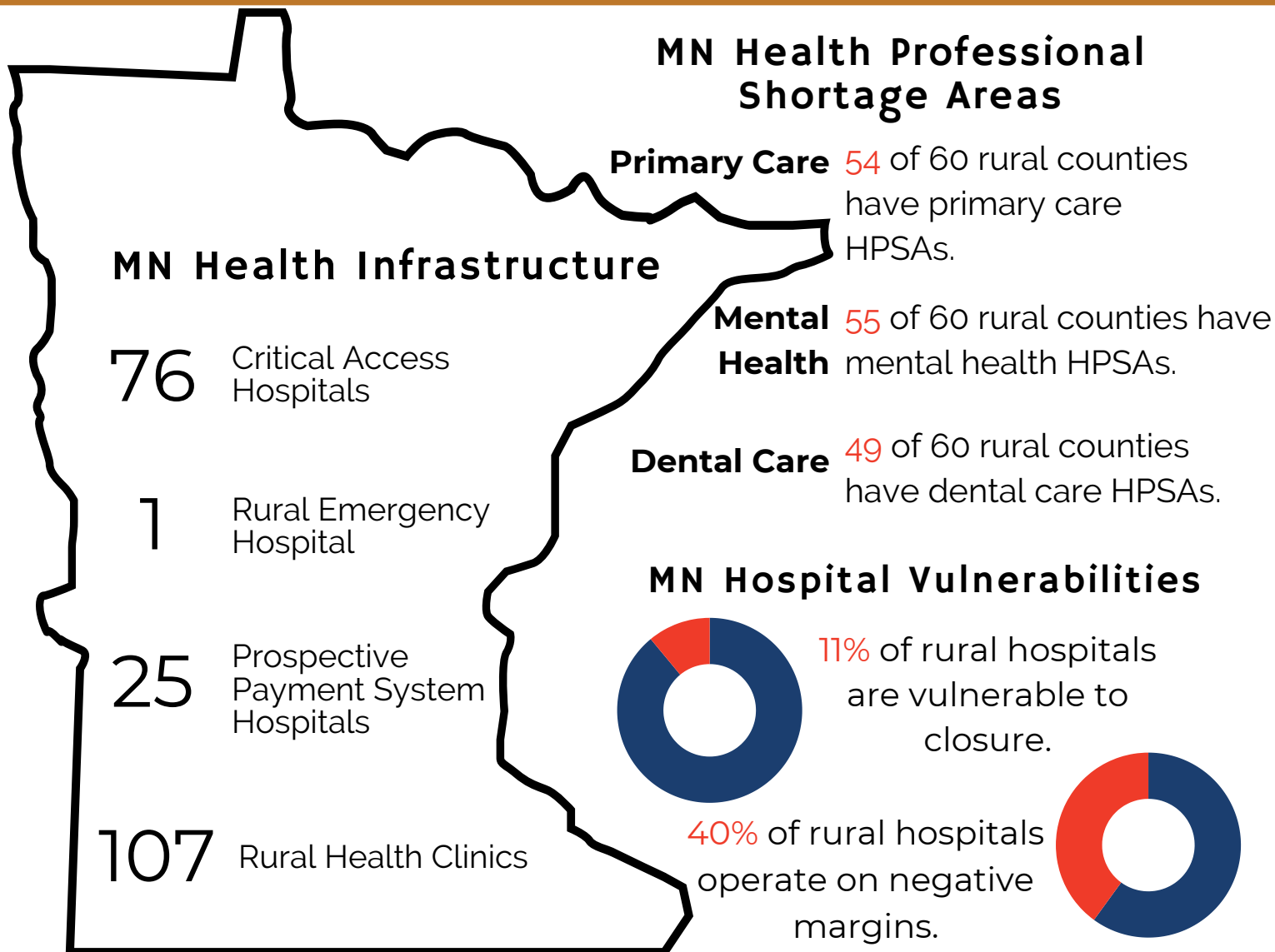
Source: RHI Hub, 2024.

Source: Georgetown, 2024.

Source: Chartis, 2024.

Minnesota Rural Health Facts 2024

Curious about other states?



MN Hospital Closures & Conversions

3 Hospital conversions since 2010

3 Hospital closures since 2010

Source: UNC, 2024.

Source: RHI Hub, 2024.

Source: Georgetown, 2024.

Source: Chartis, 2024.

Mississippi Rural Health Facts 2024

Curious about other states?



MS Health Infrastructure

29 Critical Access Hospitals

238 Federally Qualified Health Centers

41 Prospective Payment System Hospitals

5 Rural Emergency Hospitals

242 Rural Health Clinics

6 Medicare-Dependent Hospitals

MS Health Professional Shortage Areas

Primary Care 61 of 62 rural counties have primary care HPSAs.

Mental Health 62 of 62 rural counties have mental health HPSAs.

Dental Care 61 of 62 rural counties have dental care HPSAs.

MS Hospital Vulnerabilities



49% of rural hospitals are vulnerable to closure.

61% of rural hospitals operate on negative margins.



MS Hospital Closures & Conversions

2 Hospital conversions since 2010

4 Hospital closures since 2010

Source: UNC, 2024.

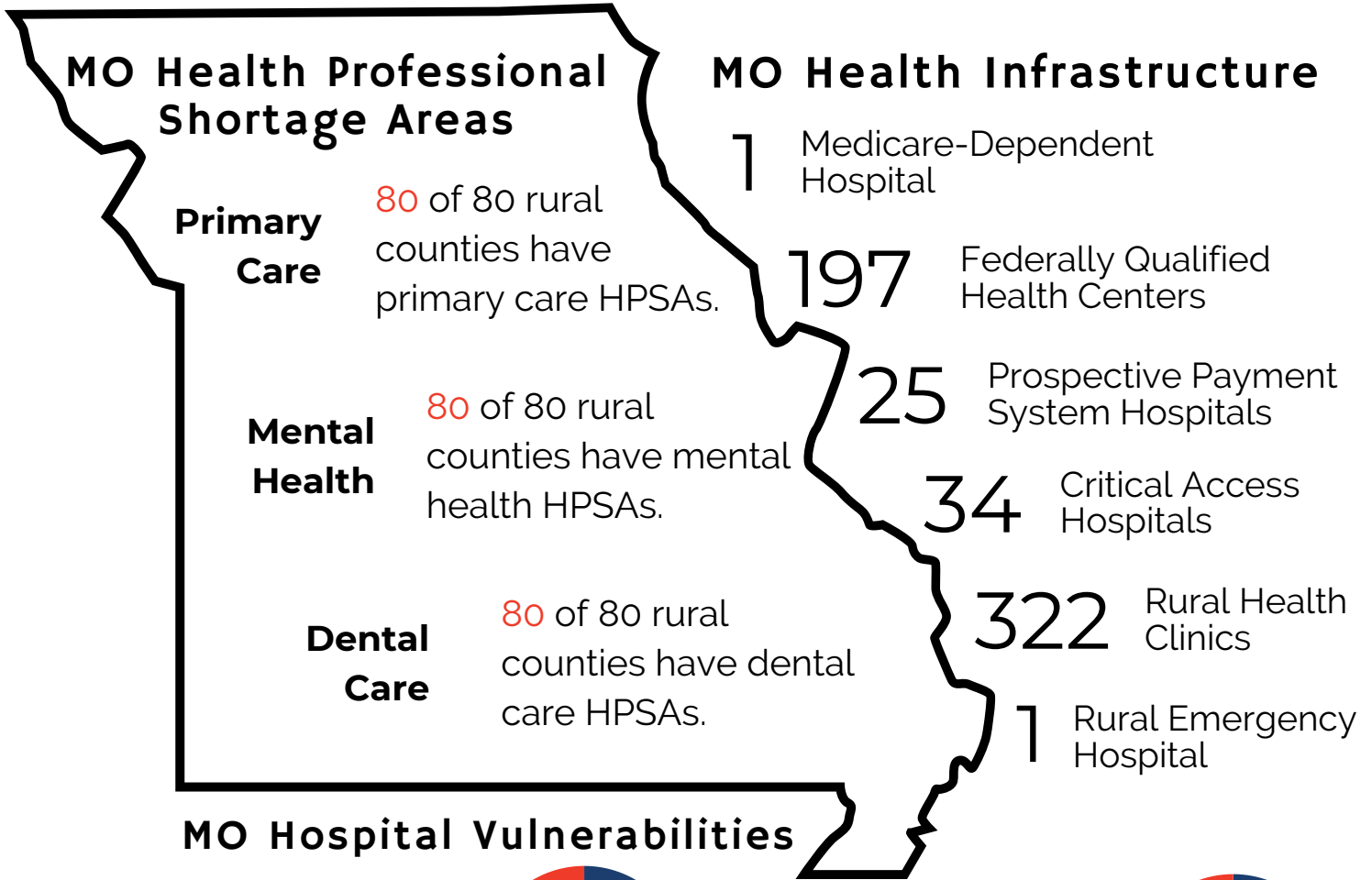
Source: RHI Hub, 2024.

Source: Georgetown, 2024.

Source: Chartis, 2024.

Missouri Rural Health Facts 2024

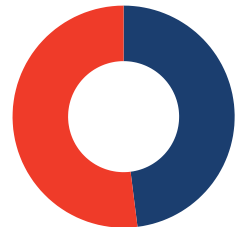
Curious about other states?



34% of rural hospitals are vulnerable to closure.



52% of rural hospitals operate on negative margins.



MO Hospital Closures & Conversions

2 Hospital conversions since 2010

8 Hospital closures since 2010

Source: UNC, 2024.

Source: RHI Hub, 2024.

Source: Georgetown, 2024.

Source: Chartis, 2024.

Montana Rural Health Facts 2024

Curious about other states?

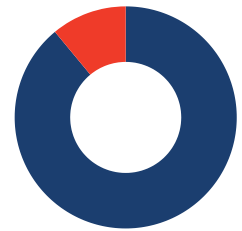


MT Health Infrastructure

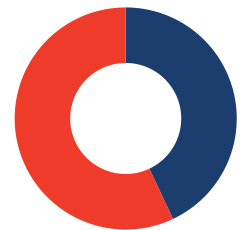
- 2 Critical Access Hospitals
- 63 Rural Health Clinics
- 3 Prospective Payment System Hospitals
- 56 Federally Qualified Health Centers

MT Hospital Vulnerabilities

11% of rural hospitals are vulnerable to closure.



57% of rural hospitals operate on negative margins.



MT Health Professional Shortage Areas

44 of 46 rural counties have primary care HPSAs.

Primary Care

42 of 46 rural counties have mental health HPSAs.

Mental Health

33 of 46 rural counties have dental care HPSAs.

Dental Care

Source: UNC, 2024.

Source: RHI Hub, 2024.

Source: Georgetown, 2024.

Source: Chartis, 2024.

Nebraska Rural Health Facts 2024

Curious about other states?



NE Health Infrastructure

62 Critical Access Hospitals

129 Rural Health Clinics

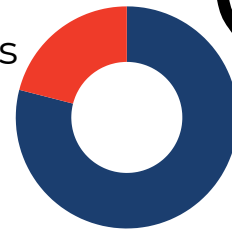
9 Prospective Payment System Hospitals

25 Federally Qualified Health Centers

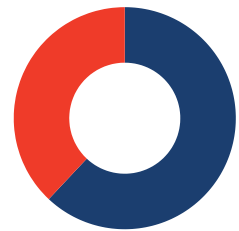
1 Rural Emergency Hospital

NE Hospital Vulnerabilities

21% of rural hospitals are vulnerable to closure.



38% of rural hospitals operate on negative margins.



NE Health Professional Shortage Areas

Primary Care

42 of 82 rural counties have primary care HPSAs.

Mental Health

81 of 82 rural counties have mental health HPSAs.

Dental Care

28 of 82 rural counties have dental care HPSAs.

NE Hospital Conversions

2 Hospital conversions since 2010

Source: UNC, 2024.

Source: RHI Hub, 2024.

Source: Georgetown, 2024.

Source: Chartis, 2024.

Nevada Rural Health Facts 2024

Curious about other states?



NV Health Professional Shortage Areas

Primary Care 12 of 12 rural counties have primary care HPSAs.

Mental Health 12 of 12 rural counties have mental health HPSAs.

Dental Care 10 of 12 rural counties have dental care HPSAs.

NV Health Infrastructure

13 Critical Access Hospitals

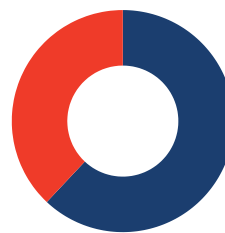
19 Rural Health Clinics

1 Prospective Payment System Hospitals

18 Federally Qualified Health Centers

NV Hospital Vulnerabilities

38% of rural hospitals operate on negative margins.



NV Hospital Closures & Conversions

1 Hospital conversion since 2010

1 Hospital closure since 2010

Source: UNC, 2024.

Source: RHI Hub, 2024.

Source: Georgetown, 2024.

Source: Chartis, 2024.

New Hampshire Rural Health Facts 2024

Curious about other states?



NH Health Professional Shortage Areas

7 of 7 rural counties have primary care HPSAs.

Primary Care

5 of 7 rural counties have mental health HPSAs.

Mental Health

2 of 7 rural counties have dental care HPSAs.

Dental Care

NH Health Infrastructure

13 Critical Access Hospitals

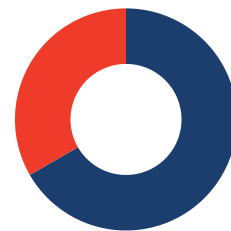
18 Rural Health Clinics

29 Federally Qualified Health Centers

5 Prospective Payment System Hospitals

1 Medicare-Dependent Hospital

NH Hospital Vulnerabilities



33% of rural hospitals operate on negative margins.

Source: UNC, 2024.

Source: RHI Hub, 2024.

Source: Georgetown, 2024.

Source: Chartis, 2024.

New Mexico Rural Health Facts 2024

Curious about other states?



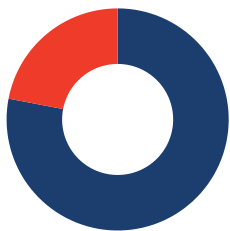
NM Health Infrastructure

- 1 Rural Emergency Hospital
- 13 Critical Access Hospitals
- 14 Prospective Payment System Hospitals
- 20 Rural Health Clinics
- 109 Federally Qualified Health Centers

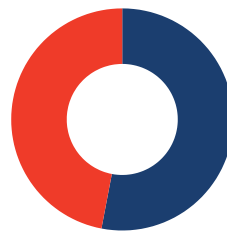
NM Health Professional Shortage Areas

- Primary Care** 25 of 26 rural counties have primary care HPSAs.
- Mental Health** 25 of 26 rural counties have mental health HPSAs.
- Dental Care** 25 of 26 rural counties have dental care HPSAs.

NM Hospital Vulnerabilities



22% of rural hospitals operate on negative margins.



47% of rural hospitals are vulnerable to closure.

NM Hospital Conversions

1 Hospital conversion since 2010

Source: UNC, 2024.

Source: RHI Hub, 2024.

Source: Georgetown, 2024.

Source: Chartis, 2024.

New York Rural Health Facts 2024

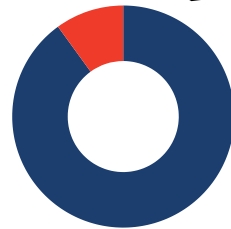
Curious about other states?



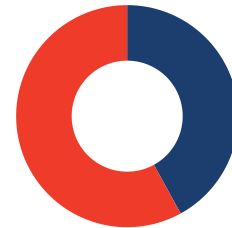
NY Health Infrastructure

- 115 Federally Qualified Health Centers
- 36 Prospective Payment System Hospitals
- 4 Medicare-Dependent Hospitals
- 21 Critical Access Hospitals
- 54 Rural Health Clinics

NY Hospital Vulnerabilities



10% of rural hospitals are vulnerable to closure.



58% of rural hospitals operate on negative margins.

NY Health Professional Shortage Areas

24 of 25 rural counties have primary care HPSAs.

Primary Care

22 of 25 rural counties have mental health HPSAs.

Mental Health

15 of 25 rural counties have dental care HPSAs.

Dental Care

NY Hospital Conversions

5 Hospital conversions since 2010

Source: UNC, 2024.

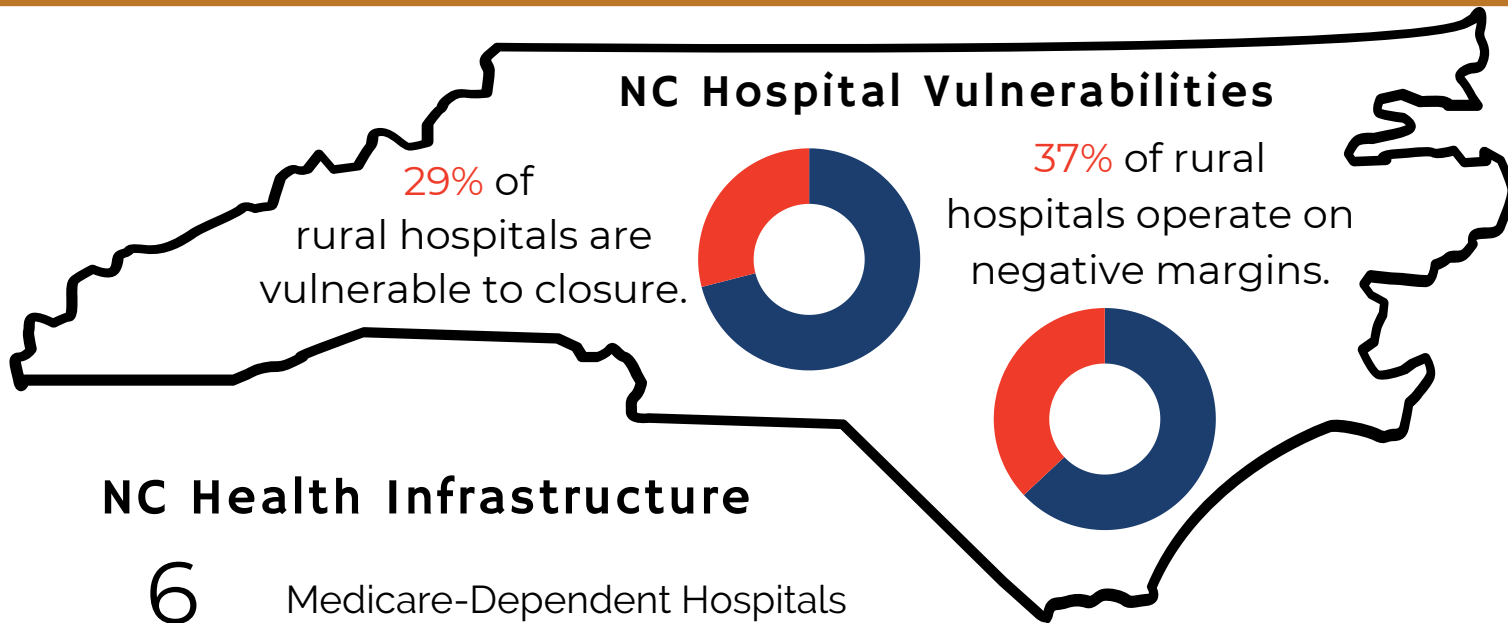
Source: RHI Hub, 2024.

Source: Georgetown, 2024.

Source: Chartis, 2024.

North Carolina Rural Health Facts 2024

Curious about other states?



NC Health Infrastructure

- 6 Medicare-Dependent Hospitals
- 20 Critical Access Hospitals
- 37 Prospective Payment System Hospitals
- 93 Rural Health Clinics
- 265 Federally Qualified Health Centers

NC Health Professional Shortage Areas

- Primary Care** 54 of 55 rural counties have primary care HPSAs.
- Mental Health** 55 of 55 rural counties have mental health HPSAs.
- Dental Care** 53 of 55 rural counties have dental care HPSAs.

NC Hospital Closures & Conversions

4 Hospital conversions since 2010

8 Hospital closures since 2010

Source: UNC, 2024.

Source: RHI Hub, 2024.

Source: Georgetown, 2024.

Source: Chartis, 2024.

North Dakota Rural Health Facts 2024

Curious about other states?

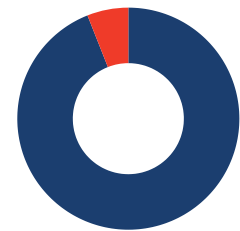


ND Health Infrastructure

- 37 Critical Access Hospitals
- 59 Rural Health Clinics
- 1 Prospective Payment System Hospital
- 16 Federally Qualified Health Centers

ND Hospital Vulnerabilities

6% of rural hospitals are vulnerable to closure.



46% of rural hospitals operate on negative margins.



ND Health Professional Shortage Areas

Primary Care

41 of 45 rural counties have primary care HPSAs.

Mental Health

43 of 45 rural counties have mental health HPSAs.

Dental Care

22 of 45 rural counties have dental care HPSAs.

ND Hospital Conversions

2 Hospital conversions since 2010

Source: UNC, 2024.

Source: RHI Hub, 2024.

Source: Georgetown, 2024.

Source: Chartis, 2024.

Ohio Rural Health Facts 2024

Curious about other states?



OH Health Infrastructure

32 Critical Access Hospitals

72 Rural Health Clinics

44 Prospective Payment System Hospitals

195 Federally Qualified Health Centers

11 Medicare-Dependent Hospitals

OH Health Professional Shortage Areas

Primary Care

33 of 47 rural counties have primary care HPSAs.

Mental Health

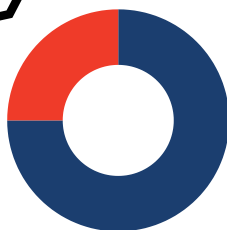
44 of 47 rural counties have mental health HPSAs.

Dental Care

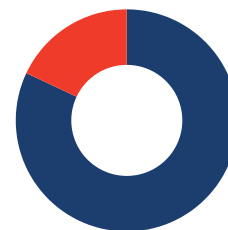
30 of 47 rural counties have dental care HPSAs.

OH Hospital Vulnerabilities

25% of rural hospitals operate on negative margins.



18% of rural hospitals are vulnerable to closure.



OH Hospital Conversions & Closures

2 Hospital conversions since 2010

1 Hospital closure since 2010

Source: UNC, 2024.

Source: RHI Hub, 2024.

Source: Georgetown, 2024.

Source: Chartis, 2024.

Oklahoma Rural Health Facts 2024

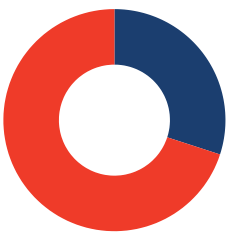
Curious about other states?



OK Health Infrastructure

OK Hospital Vulnerabilities

34% of rural hospitals are vulnerable to closure.



70% of rural hospitals operate on negative margins.

| | | | |
|---|------------------------------|-----|--------------------------------------|
| 4 | Rural Emergency Hospitals | 42 | Prospective Payment System Hospitals |
| 7 | Medicare-Dependent Hospitals | 134 | Federally Qualified Health Centers |
| | | 39 | Critical Access Hospitals |
| | | 137 | Rural Health Clinics |

OK Health Professional Shortage Areas

Primary Care 59 of 59 rural counties have primary care HPSAs.

Mental Health 59 of 59 rural counties have mental health HPSAs.

Dental Care 56 of 59 rural counties have dental care HPSAs.

OK Hospital Closures & Conversions

3 Hospital conversions since 2010

4 Hospital closures since 2010

Source: UNC, 2024.

Source: RHI Hub, 2024.

Source: Georgetown, 2024.

Source: Chartis, 2024.

Oregon Rural Health Facts 2024

Curious about other states?



OR Health Infrastructure

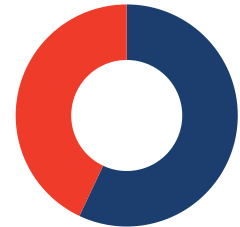
9 Federally Qualified Health Centers

25 Critical Access Hospitals

84 Prospective Payment System Hospital

108 Rural Health Clinics

OR Hospital Vulnerabilities



43% of rural hospitals operate on negative margins.

OR Health Professional Shortage Areas

Primary Care

21 of 21 rural counties have primary care HPSAs.

Mental Health

21 of 21 rural counties have mental health HPSAs.

Dental Care

20 of 21 rural counties have dental care HPSAs.

Source: UNC, 2024.

Source: RHI Hub, 2024.

Source: Georgetown, 2024.

Source: Chartis, 2024.

Pennsylvania Rural Health Facts 2024

Curious about other states?

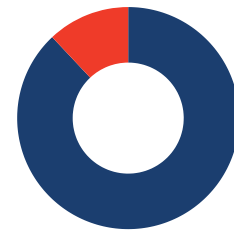


PA Health Infrastructure

| | |
|-----|--------------------------------------|
| 6 | Medicare-Dependent Hospitals |
| 16 | Critical Access Hospitals |
| 42 | Prospective Payment System Hospitals |
| 72 | Rural Health Clinics |
| 159 | Federally Qualified Health Centers |

PA Hospital Vulnerabilities

12% of rural hospitals are vulnerable to closure.



43% of rural hospitals operate on negative margins.



PA Health Professional Shortage Areas

Primary Care 21 of 34 rural counties have primary care HPSAs.

Mental Health 16 of 34 rural counties have mental health HPSAs.

Dental Care 26 of 34 rural counties have dental care HPSAs.

PA Hospital Conversions & Closures

3 Hospital conversions since 2010

Source: UNC, 2024.

3 Hospital closures since 2010

Source: RHI Hub, 2024.

Source: Georgetown, 2024.

Source: Chartis, 2024.

South Carolina Rural Health Facts 2024

Curious about other states?



SC Health Infrastructure

133 Federally Qualified Health Centers

22 Prospective Payment System Hospitals

107 Rural Health Clinics

3 Critical Access Hospitals

1 Medicare-Dependent Hospitals

SC Health Professional Shortage Areas

Primary Care

20 of 20 rural counties have primary care HPSAs.

Mental Health

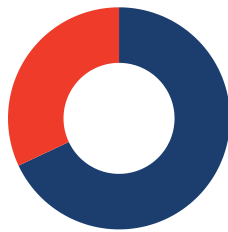
20 of 20 rural counties have mental health HPSAs.

Dental Care

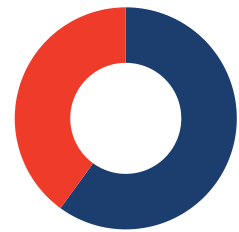
20 of 20 rural counties have dental care HPSAs.

SC Hospital Vulnerabilities

32% of rural hospitals are vulnerable to closure.



40% of rural hospitals operate on negative margins.



SC Hospital Closures

4 Hospital closures since 2010

Source: UNC, 2024.

Source: RHI Hub, 2024.

Source: Georgetown, 2024.

Source: Chartis, 2024.

South Dakota Rural Health Facts 2024

Curious about other states?

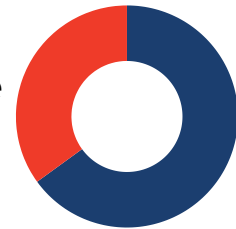
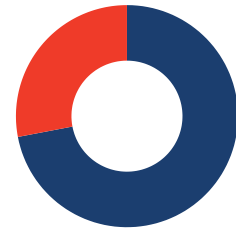


SD Health Infrastructure

- 40 Critical Access Hospitals
- 58 Rural Health Clinics
- 10 Prospective Payment System Hospitals
- 39 Federally Qualified Health Centers

SD Hospital Vulnerabilities

- 28% of rural hospitals are vulnerable to closure.
- 35% of rural hospitals operate on negative margins.



SD Health Professional Shortage Areas

- Primary Care** 50 of 58 rural counties have primary care HPSAs.
- Mental Health** 58 of 58 rural counties have mental health HPSAs.
- Dental Care** 38 of 58 rural counties have dental care HPSAs.

SD Hospital Conversions

3 Hospital conversions since 2010

Source: UNC, 2024.

Source: RHI Hub, 2024.

Source: Georgetown, 2024.

Source: Chartis, 2024.

Tennessee Rural Health Facts 2024

Curious about other states?



TN Hospital Vulnerabilities

44% of rural hospitals are vulnerable to closure



55% of rural hospitals operate on negative margins



TN Health Infrastructure

| | |
|-----|--------------------------------------|
| 1 | Rural Emergency Hospital |
| 15 | Critical Access Hospitals |
| 17 | Medicare-Dependent Hospitals |
| 40 | Prospective Payment System Hospitals |
| 100 | Federally Qualified Health Centers |
| 300 | Rural Health Clinics |

TN Health Professional Shortage Areas

Primary Care

51 of 51 rural counties have primary care HPSAs.

Mental Health

51 of 51 rural counties have mental health HPSAs.

Dental Care

51 of 51 rural counties have dental care HPSAs.

TN Hospital Conversions & Closures

5 Hospital conversions since 2010

Source: UNC, 2024.

9 Hospital closures since 2010

Source: RHI Hub, 2024.

Source: Georgetown, 2024.

Source: Chartis, 2024.

Texas Rural Health Facts 2024

Curious about other states?



TX Hospital Vulnerabilities

32% of rural hospitals are vulnerable to closure



43% of rural hospitals operate on negative margins

91
Critical Access Hospitals

TX Health Infrastructure

4 Rural Emergency Hospitals

6 Medicare-Dependent Hospitals

70 Prospective Payment System Hospitals

215 Federally Qualified Health Centers

356
Rural Health Clinics

TX Health Professional Shortage Areas

Primary Care 159 of 168 rural counties have primary care HPSAs.

Mental Health 167 of 168 rural counties have mental health HPSAs.

Dental Care 86 of 168 rural counties have dental care HPSAs.

TX Hospital Conversions & Closures

5 Hospital conversions since 2010

19 Hospital closures since 2010

Source: UNC, 2024.

Source: RHI Hub, 2024.

Source: Georgetown, 2024.

Source: Chartis, 2024.

Utah Rural Health Facts 2024

Curious about other states?



UT Health Infrastructure

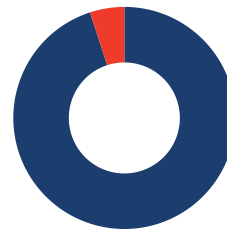
13 Critical Access Hospitals

10 Prospective Payment System Hospitals

19 Rural Health Clinics

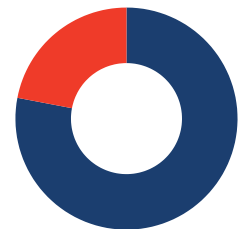
27 Federally Qualified Health Centers

UT Hospital Vulnerabilities



5% of rural hospitals are vulnerable to closure.

22% of rural hospitals operate on negative margins.



UT Health Professional Shortage Areas

Primary Care

15 of 20 rural counties have primary care HPSAs.

Mental Health

20 of 20 rural counties have mental health HPSAs.

Dental Care

15 of 20 rural counties have dental care HPSAs.

Source: UNC, 2024.

Source: RHI Hub, 2024.

Source: Georgetown, 2024.

Source: Chartis, 2024.

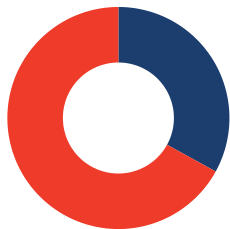
Vermont Rural Health Facts 2024

Curious about other states?



VT Hospital Vulnerabilities

67% of rural hospitals operate on negative margins.



VT Health Professional Shortage Areas

Primary Care

9 of 11 rural counties have primary care HPSAs.

Mental Health

11 of 11 rural counties have mental health HPSAs.

Dental Care

1 of 11 rural counties have dental care HPSAs.

Source: UNC, 2024.

Source: RHI Hub, 2024.

VT Health Infrastructure

13 Critical Access Hospitals

25 Federally Qualified Health Centers

10 Prospective Payment System Hospitals

19 Rural Health Clinics

1 Medicare-Dependent Hospital

Source: Georgetown, 2024.

Source: Chartis, 2024.

Virginia Rural Health Facts 2024

Curious about other states?



VA Health Professional Shortage Areas

Primary Care

52 of 53 rural counties have primary care HPSAs.

Mental Health

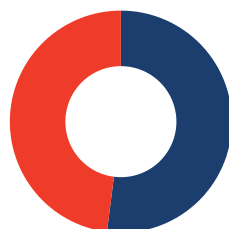
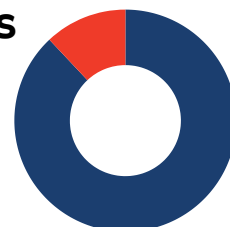
53 of 53 rural counties have mental health HPSAs.

Dental Care

50 of 53 rural counties have dental care HPSAs.

VA Hospital Vulnerabilities

12% of rural hospitals are vulnerable to closure.



48% of rural hospitals operate on negative margins.

VA Health Infrastructure

6 Medicare-Dependent Hospitals

8 Critical Access Hospitals

27 Prospective Payment System Hospitals

106 Federally Qualified Health Centers

83

Rural Health Clinics

VA Hospital Conversions & Closures



Hospital conversion since 2010



Hospital closure since 2010

Source: UNC, 2024.

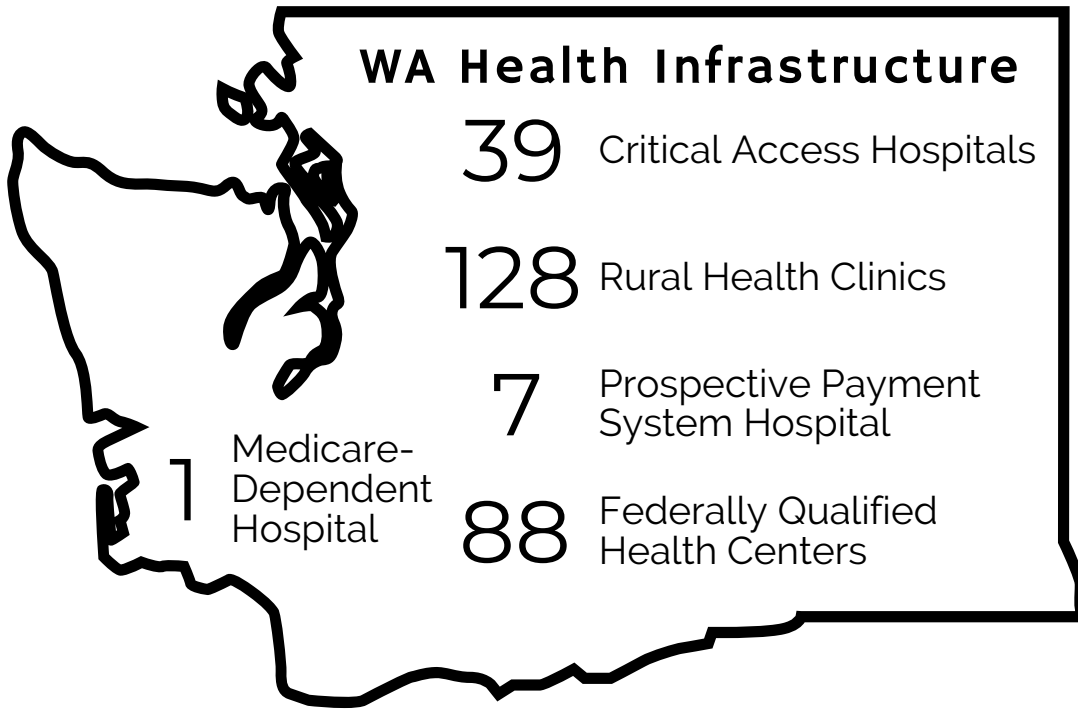
Source: RHI Hub, 2024.

Source: Georgetown, 2024.

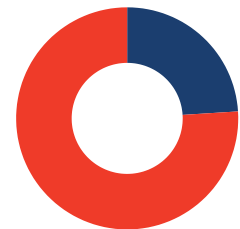
Source: Chartis, 2024.

Washington Rural Health Facts 2024

Curious about other states?



WA Hospital Vulnerabilities



76% of rural hospitals operate on negative margins.

WA Health Professional Shortage Areas

Primary Care

20 of 20 rural counties have primary care HPSAs.

Mental Health

20 of 20 rural counties have mental health HPSAs.

Dental Care

20 of 20 rural counties have dental care HPSAs.

WA Hospital Closures

1 Hospital closure since 2010

Source: UNC, 2024.

Source: RHI Hub, 2024.

Source: Georgetown, 2024.

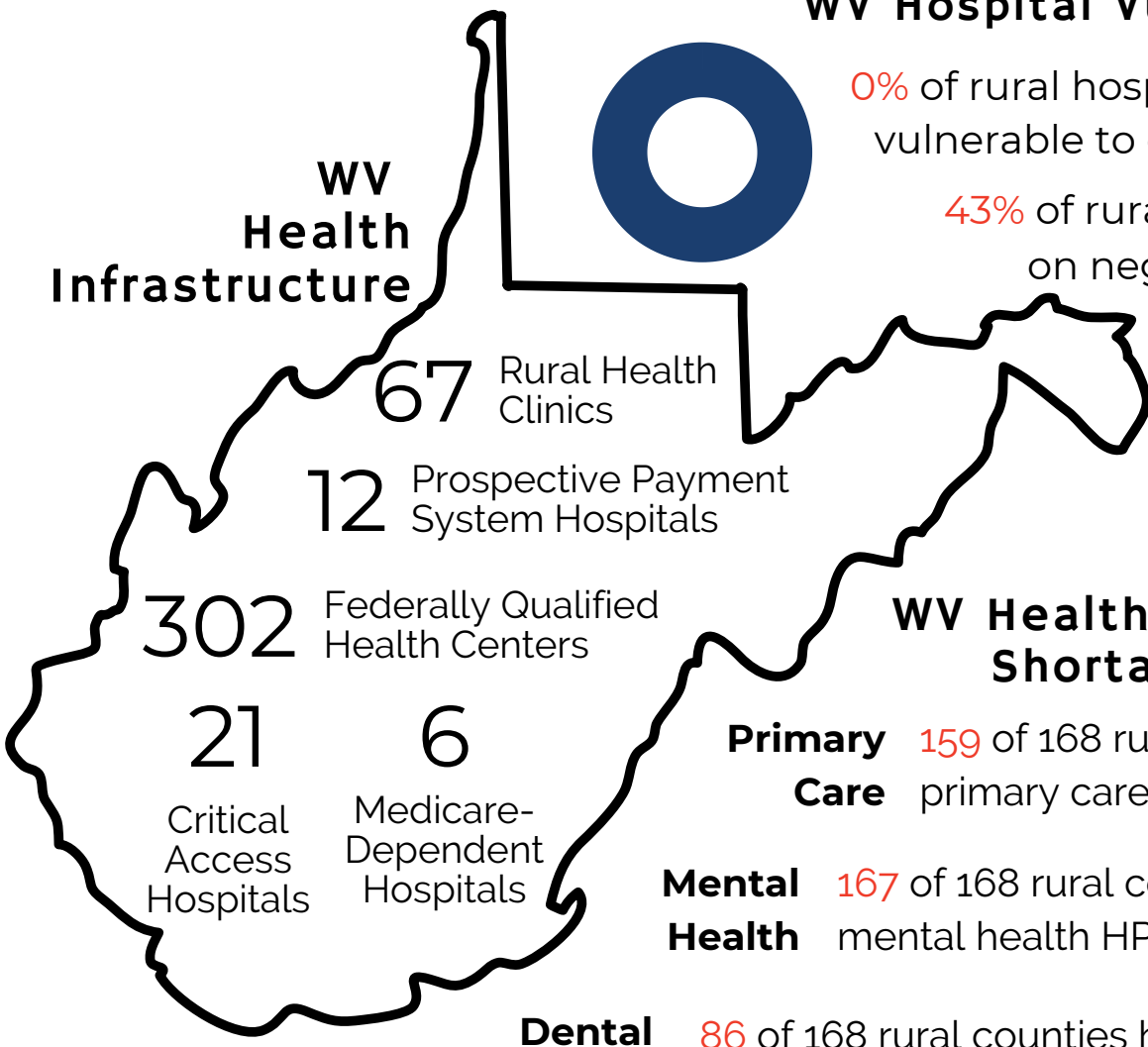
Source: Chartis, 2024.

West Virginia Rural Health Facts 2024

Curious about other states?



WV Health Infrastructure



WV Hospital Vulnerabilities

0% of rural hospitals are vulnerable to closure.

43% of rural hospitals operate on negative margins.

WV Health Professional Shortage Areas

Primary Care 159 of 168 rural counties have primary care HPSAs.

Mental Health 167 of 168 rural counties have mental health HPSAs.

Dental Care 86 of 168 rural counties have dental care HPSAs.

WV Hospital Closures & Conversions

1 Hospital conversion since 2010

2 Hospital closures since 2010

Source: UNC, 2024.

Source: RHI Hub, 2024.

Source: Georgetown, 2024.

Source: Chartis, 2024.

Wisconsin Rural Health Facts 2024

Curious about other states?



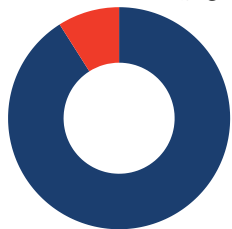
WI Health Professional Shortage Areas

Primary Care 33 of 45 rural counties have primary care HPSAs.

Mental Health 35 of 35 rural counties have mental health HPSAs.

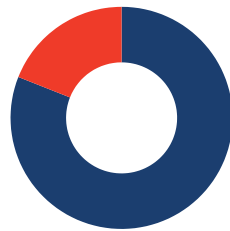
Dental Care 32 of 35 rural counties have dental care HPSAs.

WI Hospital Vulnerabilities



9% of rural hospitals are vulnerable to closure.

19% of rural hospitals operate on negative margins.



WI Health Infrastructure

58 Critical Access Hospitals

44 Federally Qualified Health Centers

25 Prospective Payment System Hospitals

141 Rural Health Clinics

5 Medicare-Dependent Hospitals

WI Hospital Conversions



Hospital conversion since 2010

Source: UNC, 2024.

Source: RHI Hub, 2024.

Source: Georgetown, 2024.

Source: Chartis, 2024.

Wyoming Rural Health Facts 2024

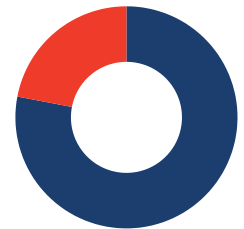
Curious about other states?



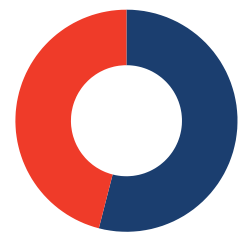
WY Health Professional Shortage Areas

| | |
|----------------------|---|
| Primary Care | 18 of 21 rural counties have primary care HPSAs. |
| Mental Health | 21 of 21 rural counties have mental health HPSAs. |
| Dental Care | 7 of 21 rural counties have dental care HPSAs. |

WY Hospital Vulnerabilities



22% of rural hospitals are vulnerable to closure.



46% of rural hospitals operate on negative margins.

WY Health Infrastructure

| | | | |
|----------------------|---------------------------|------------------------------------|--------------------------------------|
| 9 | 16 | 17 | 28 |
| Rural Health Clinics | Critical Access Hospitals | Federally Qualified Health Centers | Prospective Payment System Hospitals |

Source: UNC, 2024.

Source: RHI Hub, 2024.

Source: Georgetown, 2024.

Source: Chartis, 2024.